

Ditre Italia Products

2024

—

Tessuti *Fabrics*

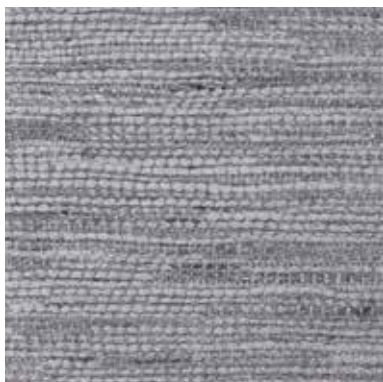
DITRE
italia

CAT. U

Upside



UPSIDE 102



UPSIDE 105



UPSIDE 106



UPSIDE 108



UPSIDE 112



UPSIDE 116



UPSIDE 118

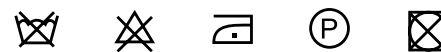


UPSIDE 120

INFORMAZIONI TECNICHE / TECHNICAL INFORMATION

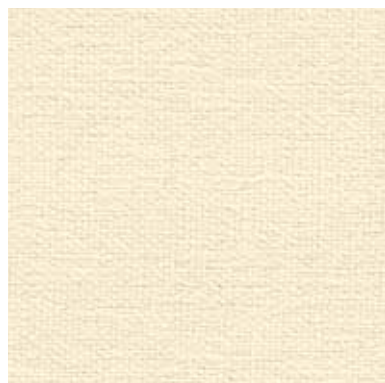
Composizione / composition	41% VI - 26% CO - 21% LI - 5% PL
Martindale / martindale	36.000 cicli/cycles
Pilling / Pilling	4

MANUTENZIONE / MAINTENANCE



CAT. U

Universal



UNIVERSAL 02



UNIVERSAL 05



UNIVERSAL 11



UNIVERSAL 25



UNIVERSAL 26



UNIVERSAL 32



UNIVERSAL 33



UNIVERSAL 50

INFORMAZIONI TECNICHE / TECHNICAL INFORMATION

Composizione / composition	24% CA - 44% LI - 32% CO
Martindale / martindale	30.000 cicli/cycles
Pilling / Pilling	3/4

MANUTENZIONE / MAINTENANCE



CAT. U

Unique



UNIQUE 101



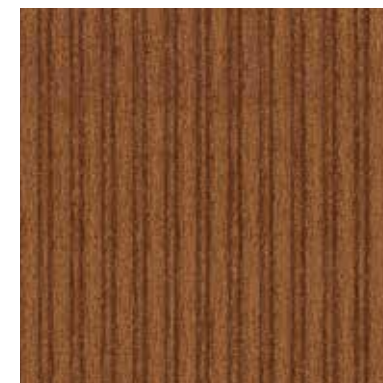
UNIQUE 102



UNIQUE 103



UNIQUE 104



UNIQUE 105



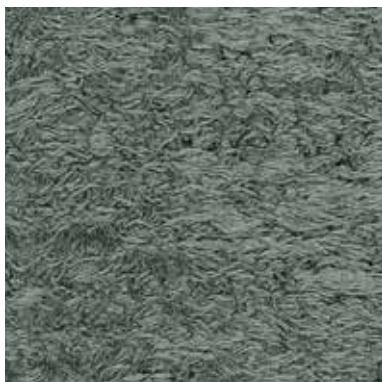
UNIQUE 106

INFORMAZIONI TECNICHE / TECHNICAL INFORMATION

Composizione / composition	39% PL - 39% CO - 22%PC
Martindale / martindale	20.000 cicli/cycles
Pilling / Pilling	3/4

MANUTENZIONE / MAINTENANCE

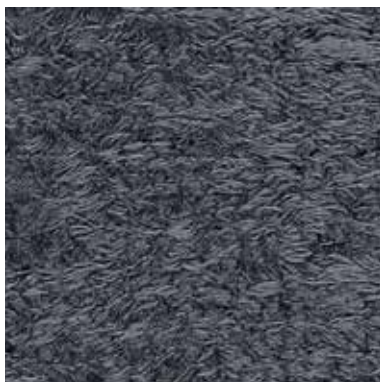




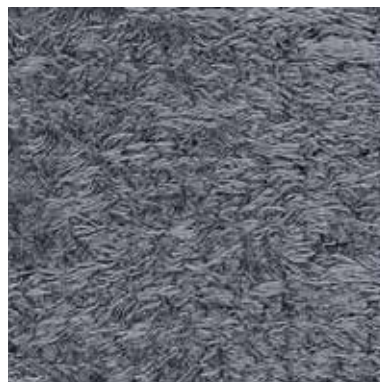
UBER 001



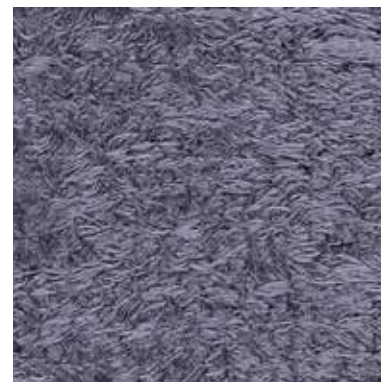
UBER 004



UBER 005



UBER 006



UBER 007



UBER 010



UBER 011



UBER 013



UBER 014



UBER 015

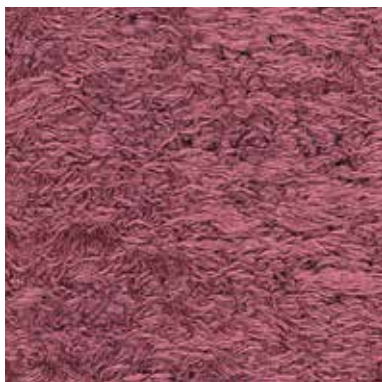
INFORMAZIONI TECNICHE / TECHNICAL INFORMATION

Composizione / composition	59% PC - 41% PL
Martindale / martindale	30.000 cicli/cycles
Pilling / Pilling	3/4

MANUTENZIONE / MAINTENANCE

CAT. U

Uber



UBER 016



UBER 017



UBER 021



UBER 023



UBER 024

INFORMAZIONI TECNICHE / TECHNICAL INFORMATION

Composizione / composition	59% PC - 41% PL
Martindale / martindale	30.000 cicli/cycles
Pilling / Pilling	3/4

MANUTENZIONE / MAINTENANCE

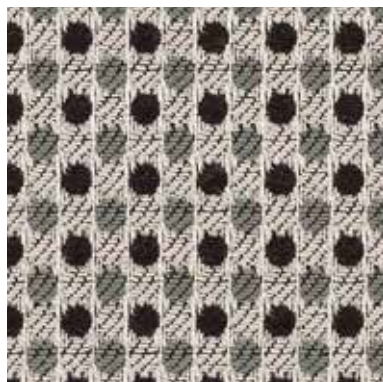


CAT. T

Twist



TWIST 05



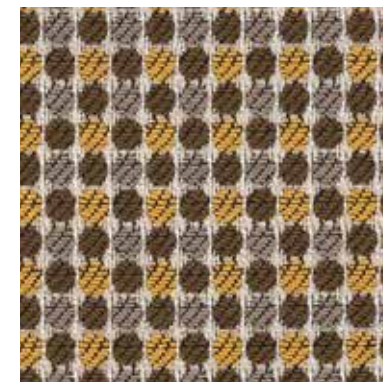
TWIST 07



TWIST 09



TWIST 10



TWIST 11

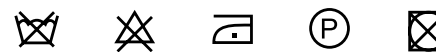


TWIST 12

INFORMAZIONI TECNICHE / TECHNICAL INFORMATION

Composizione / composition	77% VI - 23% PL
Martindale / martindale	20.000 cicli/cycles
Pilling / Pilling	4

MANUTENZIONE / MAINTENANCE





TWIN 001



TWIN 002



TWIN 004



TWIN 007



TWIN 008



TWIN 009



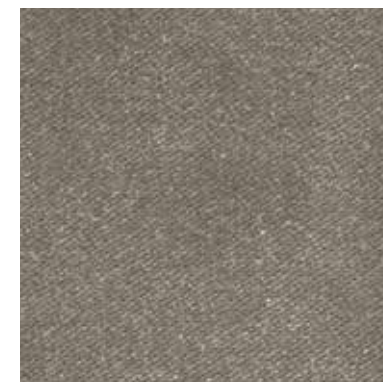
TWIN 011



TWIN 012



TWIN 013



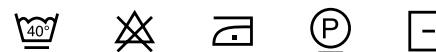
TWIN 017

INFORMAZIONI TECNICHE / TECHNICAL INFORMATION

Composizione / composition	100% RPL
Martindale / martindale	50.000 cicli/cycles
Pilling / Pilling	4

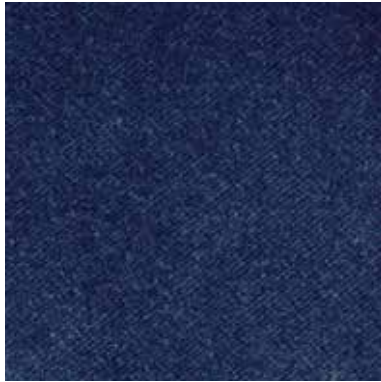
 Eco-Friendly

MANUTENZIONE / MAINTENANCE





TWIN 018



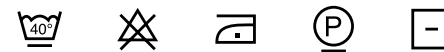
TWIN 020

INFORMAZIONI TECNICHE / TECHNICAL INFORMATION

Composizione / composition	100% RPL
Martindale / martindale	50.000 cicli/cycles
Pilling / Pilling	4

 Eco-Friendly

MANUTENZIONE / MAINTENANCE





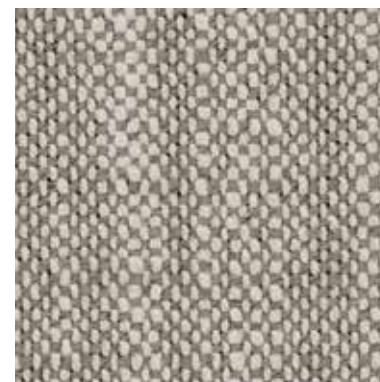
TRUST 503



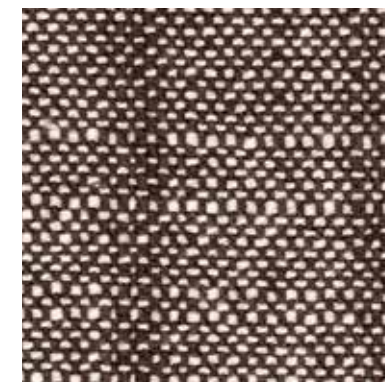
TRUST 512



TRUST 601



TRUST 605



TRUST 607



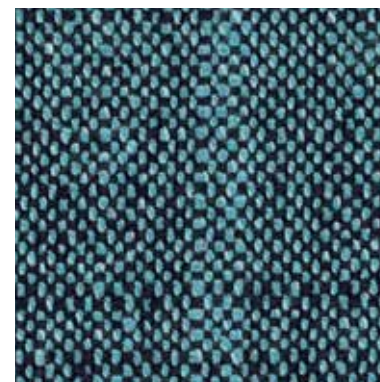
TRUST 611



TRUST 615



TRUST 619



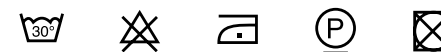
TRUST 690

INFORMAZIONI TECNICHE / TECHNICAL INFORMATION

Composizione / composition	80% RCO - 20% PL
Martindale / martindale	55.000 cicli/cycles
Pilling / Pilling	3/4

 Eco-Friendly

MANUTENZIONE / MAINTENANCE



CAT. T

Trend



TREND 001



TREND 002



TREND 003



TREND 004



TREND 010



TREND 011



TREND 033



TREND 034



TREND 035

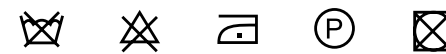


TREND 039

INFORMAZIONI TECNICHE / TECHNICAL INFORMATION

Composizione / composition	55% VI - 45% CO
Martindale / martindale	50.000 cicli/cycles
Pilling / Pilling	4

MANUTENZIONE / MAINTENANCE



CAT. T

Trend



TREND 044



TREND 052



TREND 068



TREND 088



TREND 231



TREND 232



TREND 233

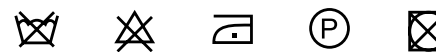


TREND 234

INFORMAZIONI TECNICHE / TECHNICAL INFORMATION

Composizione / composition	55% VI - 45% CO
Martindale / martindale	50.000 cicli/cycles
Pilling / Pilling	4

MANUTENZIONE / MAINTENANCE



CAT. T

Travel



TRAVEL 701



TRAVEL 702



TRAVEL 703



TRAVEL 705



TRAVEL 706

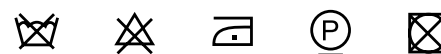


TRAVEL 707

INFORMAZIONI TECNICHE / TECHNICAL INFORMATION

Composizione / composition	54% VI - 38% CO - 8% PL
Martindale / martindale	25.000 cicli/cycles
Pilling / Pilling	4

MANUTENZIONE / MAINTENANCE

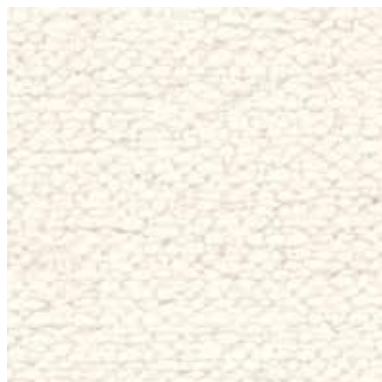


CAT. T

Tosca



TOSCA 100



TOSCA 111



TOSCA 200



TOSCA 304



TOSCA 400



TOSCA 401



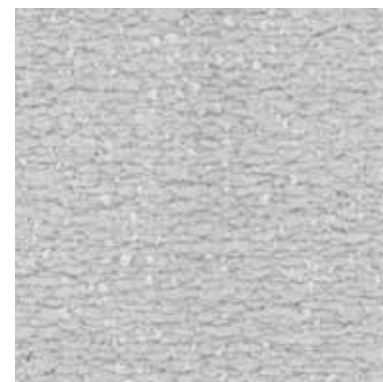
TOSCA 402



TOSCA 403



TOSCA 500



TOSCA 600

INFORMAZIONI TECNICHE / TECHNICAL INFORMATION

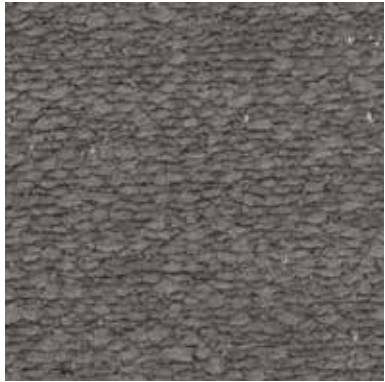
Composizione / composition	96% PL - 4% EA
Martindale / martindale	40.000 cicli/cycles
Pilling / Pilling	4/5

MANUTENZIONE / MAINTENANCE



CAT. T

Tosca



TOSCA 601



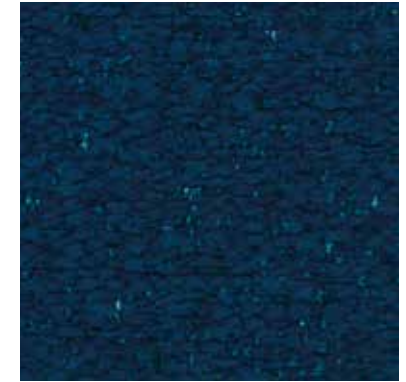
TOSCA 605



TOSCA 700



TOSCA 702

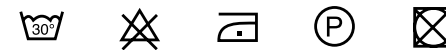


TOSCA 704

INFORMAZIONI TECNICHE / TECHNICAL INFORMATION

Composizione / composition	96% PL - 4% EA
Martindale / martindale	40.000 cicli/cycles
Pilling / Pilling	4/5

MANUTENZIONE / MAINTENANCE



CAT. T

Toledo



TOLEDO 102



TOLEDO 103



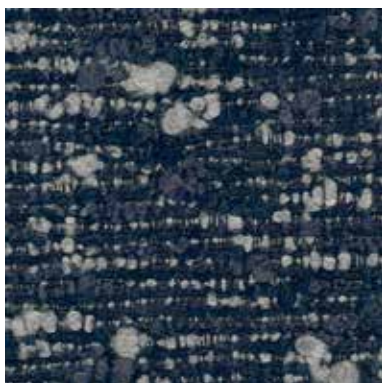
TOLEDO 104



TOLEDO 105



TOLEDO 107



TOLEDO 108



TOLEDO 109

INFORMAZIONI TECNICHE / TECHNICAL INFORMATION

Composizione / composition	58% PC - 30% PL - 12% WO
Martindale / martindale	30.000 cicli/cycles
Pilling / Pilling	4

MANUTENZIONE / MAINTENANCE



CAT. T

Time



TIME 007



TIME 010



TIME 024



TIME 029



TIME 035



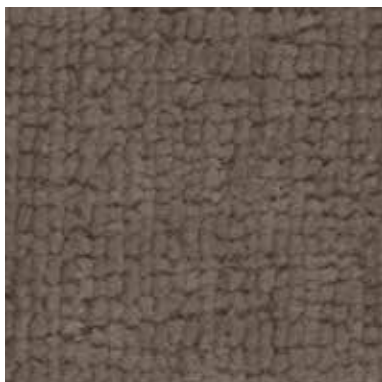
TIME 036

INFORMAZIONI TECNICHE / TECHNICAL INFORMATION

Composizione / composition	49% PC - 14% CO - 14% PL - 23% LI
Martindale / martindale	>35.000 cicli/cycles
Pilling / Pilling	4

MANUTENZIONE / MAINTENANCE





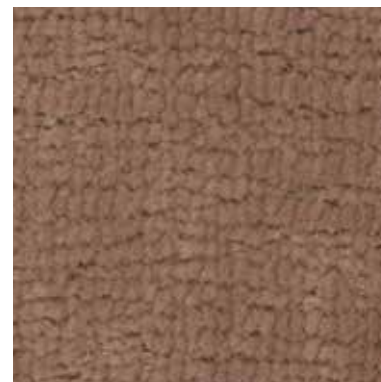
TEXAS 004



TEXAS 008



TEXAS 011



TEXAS 013



TEXAS 015



TEXAS 016



TEXAS 018



TEXAS 022



TEXAS 023



TEXAS 025

INFORMAZIONI TECNICHE / TECHNICAL INFORMATION

Composizione / composition	72 % RPET - 28% PL
Martindale / martindale	60.000 cicli/cycles
Pilling / Pilling	5

 Eco-Friendly

MANUTENZIONE / MAINTENANCE



CAT. T

Teddy



TEDDY 25



TEDDY 27



TEDDY 102



TEDDY 110



TEDDY 111



TEDDY 116



TEDDY 117



TEDDY 121



TEDDY 201



TEDDY 204

INFORMAZIONI TECNICHE / TECHNICAL INFORMATION

Composizione / composition	80% PL - 20% CO
Martindale / martindale	100.000 cicli/cycles
Pilling / Pilling	4

MANUTENZIONE / MAINTENANCE



CAT. T

Teddy



TEDDY 207



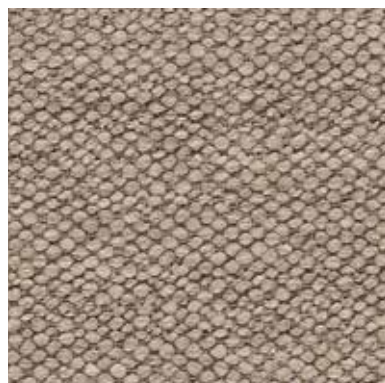
TEDDY 209

INFORMAZIONI TECNICHE / TECHNICAL INFORMATION

Composizione / composition	80% PL - 20% CO
Martindale / martindale	100.000 cicli/cycles
Pilling / Pilling	4

MANUTENZIONE / MAINTENANCE

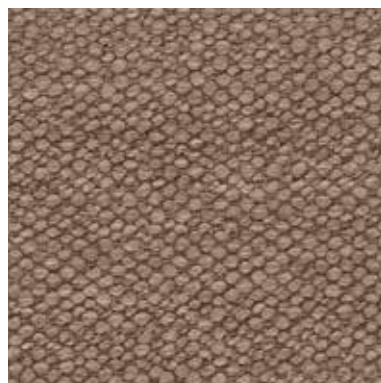




TAPE 304



TAPE 305



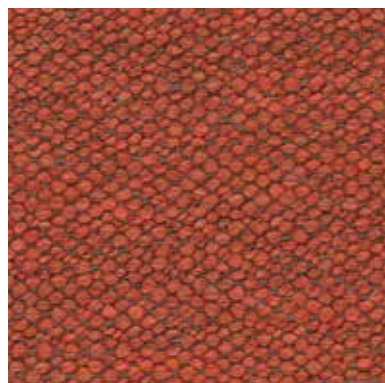
TAPE 306



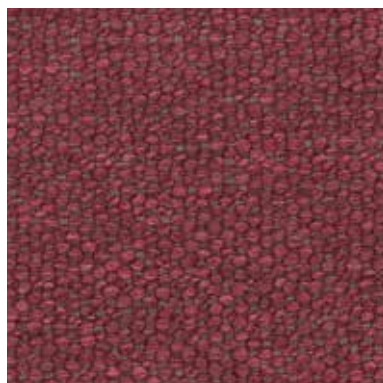
TAPE 311



TAPE 314



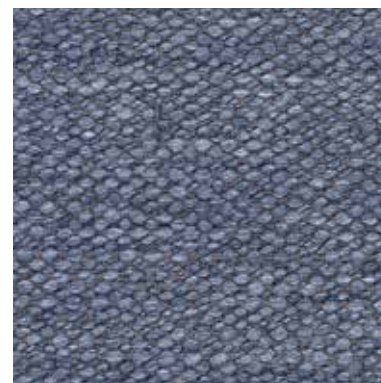
TAPE 315



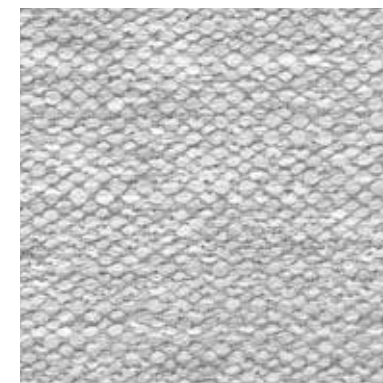
TAPE 316



TAPE 318



TAPE 320

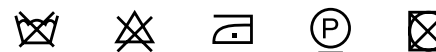


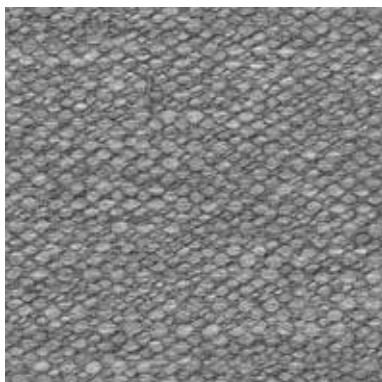
TAPE 321

INFORMAZIONI TECNICHE / TECHNICAL INFORMATION

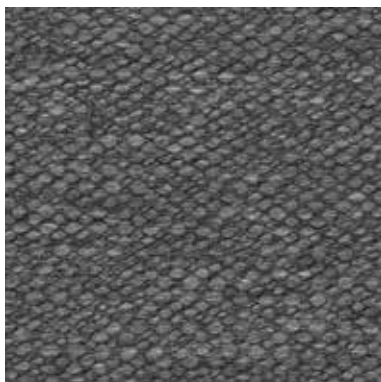
Composizione / composition	49% PC - 23% PL - 23% VI - 5% CO
Martindale / martindale	30.000 cicli/cycles
Pilling / Pilling	3/4

MANUTENZIONE / MAINTENANCE





TAPE 322



TAPE 323

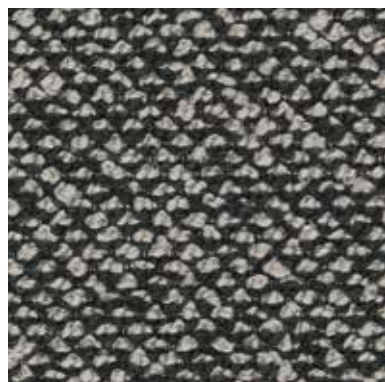
INFORMAZIONI TECNICHE / TECHNICAL INFORMATION

Composizione / composition	49% PC - 23% PL - 23% VI - 5% CO
Martindale / martindale	30.000 cicli/cycles
Pilling / Pilling	3/4

MANUTENZIONE / MAINTENANCE

CAT. T

Tango



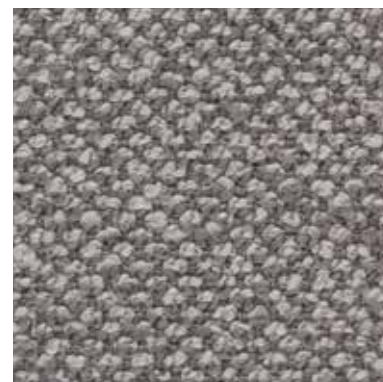
TANGO 003



TANGO 004



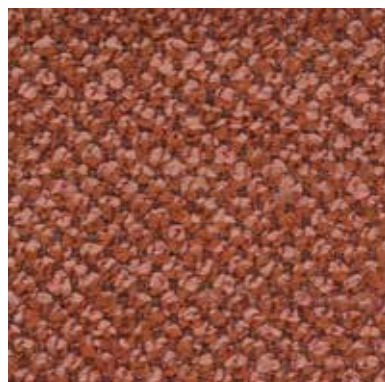
TANGO 005



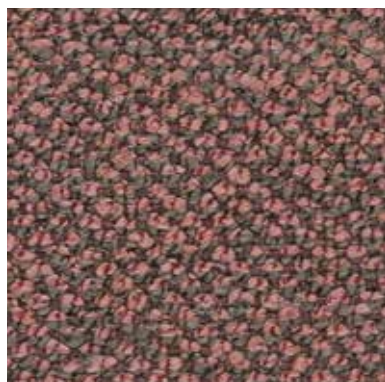
TANGO 008



TANGO 010



TANGO 012



TANGO 014



TANGO 015



TANGO 017



TANGO 018

INFORMAZIONI TECNICHE / TECHNICAL INFORMATION

Composizione / composition	70% PC - 25% PL - 5% CO
Martindale / martindale	50.000 cicli/cycles
Pilling / Pilling	4

MANUTENZIONE / MAINTENANCE



CAT. T

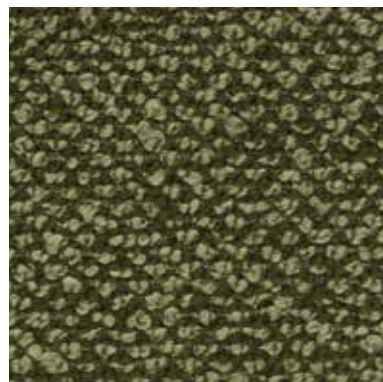
Tango



TANGO 020



TANGO 021



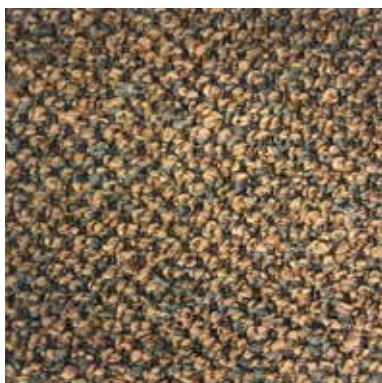
TANGO 022



TANGO 025



TANGO 027



TANGO 028

INFORMAZIONI TECNICHE / TECHNICAL INFORMATION

Composizione / composition	70% PC - 25% PL - 5% CO
Martindale / martindale	50.000 cicli/cycles
Pilling / Pilling	4

MANUTENZIONE / MAINTENANCE



CAT. T

Tallin



TALLIN 04



TALLIN 05



TALLIN 06



TALLIN 11



TALLIN 14



TALLIN 15



TALLIN 016



TALLIN 18



TALLIN 20

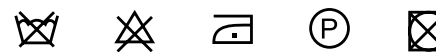


TALLIN 21

INFORMAZIONI TECNICHE / TECHNICAL INFORMATION

Composizione / composition	90% CO - 10% PL
Martindale / martindale	30.000 cicli/cycles
Pilling / Pilling	3/4

MANUTENZIONE / MAINTENANCE

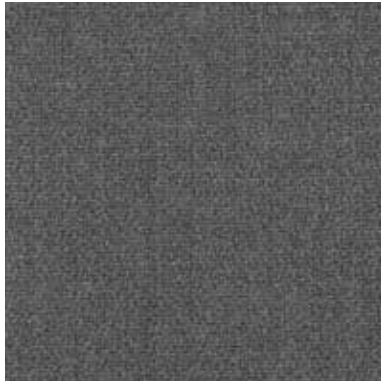


CAT. T

Tallin



TALLIN 22



TALLIN 23

INFORMAZIONI TECNICHE / TECHNICAL INFORMATION

Composizione / composition	90% CO - 10% PL
Martindale / martindale	30.000 cicli/cycles
Pilling / Pilling	3/4

MANUTENZIONE / MAINTENANCE



CAT. P

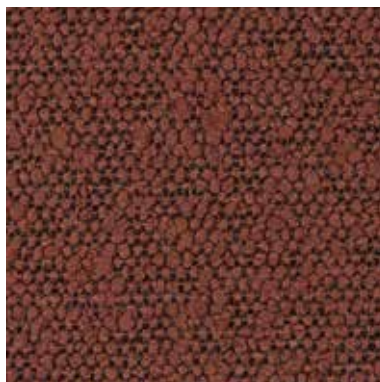
Princess



PRINCESS 901



PRINCESS 101



PRINCESS 300



PRINCESS 304



PRINCESS 400



PRINCESS 502



PRINCESS 600



PRINCESS 604



PRINCESS 705



PRINCESS 802

INFORMAZIONI TECNICHE / TECHNICAL INFORMATION

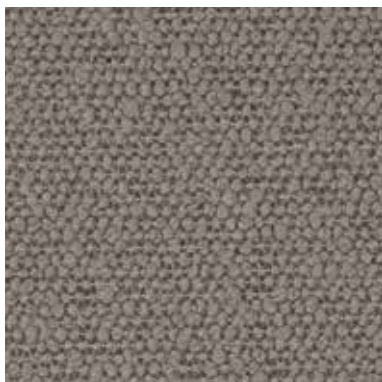
Composizione / composition	100% PLFR
Martindale / martindale	80.000 cicli/cycles
Pilling / Pilling	5

MANUTENZIONE / MAINTENANCE



CAT. P

Princess



PRINCESS 803



PRINCESS 903

INFORMAZIONI TECNICHE / TECHNICAL INFORMATION

Composizione / composition	100% PLFR
Martindale / martindale	80.000 cicli/cycles
Pilling / Pilling	5

MANUTENZIONE / MAINTENANCE





POTTER 501



POTTER 503



POTTER 509



POTTER 510



POTTER 512



POTTER 522



POTTER 524



POTTER 529



POTTER 530

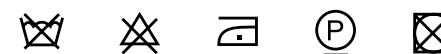


POTTER 539

INFORMAZIONI TECNICHE / TECHNICAL INFORMATION

Composizione / composition	34% PC - 24% CO - 14% WO - 12% VI - 12% PL - 4% LI
Martindale / martindale	30.000 cicli/cycles
Pilling / Pilling	4

MANUTENZIONE / MAINTENANCE



CAT. P

Potter



POTTER 540



POTTER 543

INFORMAZIONI TECNICHE / TECHNICAL INFORMATION

Composizione / composition	34% PC - 24% CO - 14% WO - 12% VI - 12% PL - 4% LI
Martindale / martindale	30.000 cicli/cycles
Pilling / Pilling	4

MANUTENZIONE / MAINTENANCE



CAT. P

Post



POST 055



POST 058



POST 059



POST 061



POST 062



POST 071



POST 075



POST 076



POST 081



POST 086

INFORMAZIONI TECNICHE / TECHNICAL INFORMATION

Composizione / composition	100% PL
Martindale / martindale	60.000 cicli/cycles
Pilling / Pilling	5

MANUTENZIONE / MAINTENANCE



CAT. P

Post



POST 089



POST 093



POST 094



POST 096



POST 101



POST 203



POST 205

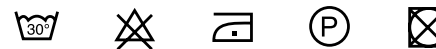


POST 208

INFORMAZIONI TECNICHE / TECHNICAL INFORMATION

Composizione / composition	100% PL
Martindale / martindale	60.000 cicli/cycles
Pilling / Pilling	5

MANUTENZIONE / MAINTENANCE





POSITANO 105



POSITANO 108



POSITANO 114



POSITANO 134



POSITANO 139



POSITANO 141

INFORMAZIONI TECNICHE / TECHNICAL INFORMATION

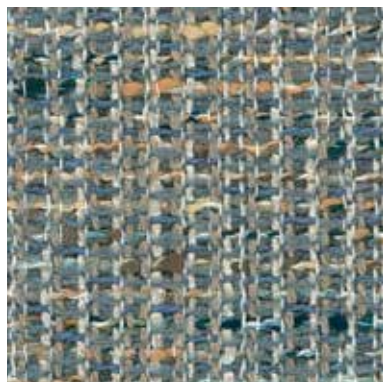
Composizione / composition	58% PVC - 14% PL 15% WO 13% CO
Martindale / martindale	20.000 cicli/cycles
Pilling / Pilling	5

MANUTENZIONE / MAINTENANCE





PLAY 001



PLAY 002



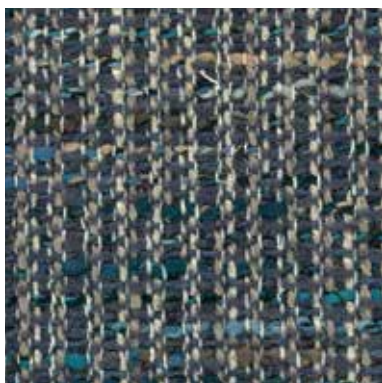
PLAY 004



PLAY 007



PLAY 008



PLAY 013



PLAY 015



PLAY 018

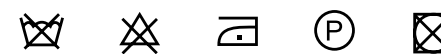


PLAY 021

INFORMAZIONI TECNICHE / TECHNICAL INFORMATION

Composizione / composition	55% CO - 16% PL - 13% VI - 12% PC - 3%LI - 1% PA
Martindale / martindale	20.000 cicli/cycles
Pilling / Pilling	4

MANUTENZIONE / MAINTENANCE





PICTURE 501



PICTURE 502



PICTURE 503



PICTURE 505



PICTURE 506

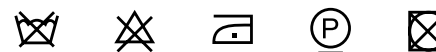


PICTURE 507

INFORMAZIONI TECNICHE / TECHNICAL INFORMATION

Composizione / composition	58% VI - 28% CO - 14% PL
Martindale / martindale	30.000 cicli/cycles
Pilling / Pilling	4

MANUTENZIONE / MAINTENANCE





PETRA 002



PETRA 010



PETRA 014



PETRA 020



PETRA 022



PETRA 026



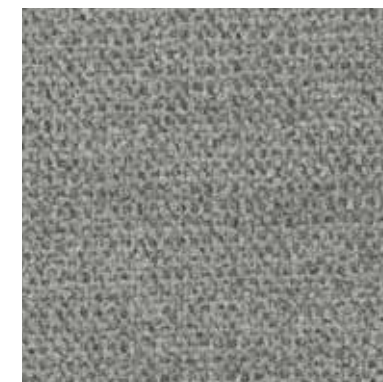
PETRA 029



PETRA 031



PETRA 036



PETRA 037

INFORMAZIONI TECNICHE / TECHNICAL INFORMATION

Composizione / composition	41% CO - 36% PL - 23% PC
Martindale / martindale	25.000 cicli/cycles
Pilling / Pilling	5

MANUTENZIONE / MAINTENANCE



CAT. P

Petra



PETRA 038



PETRA 040



PETRA 041

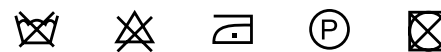


PETRA 042

INFORMAZIONI TECNICHE / TECHNICAL INFORMATION

Composizione / composition	41% CO - 36% PL - 23% PC
Martindale / martindale	25.000 cicli/cycles
Pilling / Pilling	5

MANUTENZIONE / MAINTENANCE





PECHINO 201



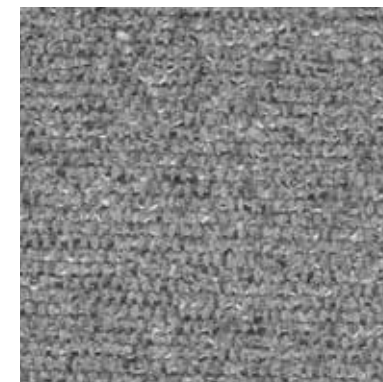
PECHINO 202



PECHINO 215



PECHINO 217



PECHINO 219



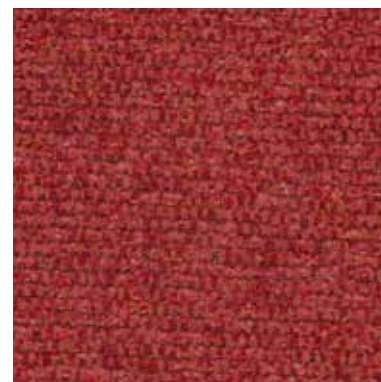
PECHINO 221



PECHINO 233



PECHINO 238



PECHINO 277



PECHINO 338

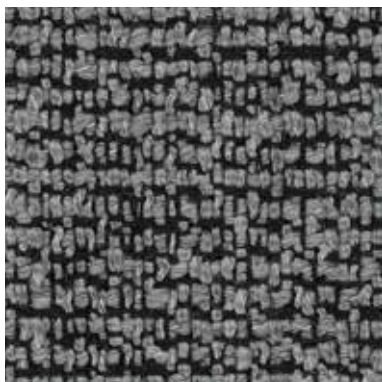
INFORMAZIONI TECNICHE / TECHNICAL INFORMATION

Composizione / composition	60% RCO - 40% PL
Martindale / martindale	60.000 cicli/cycles
Pilling / Pilling	5

 Eco-friendly

MANUTENZIONE / MAINTENANCE

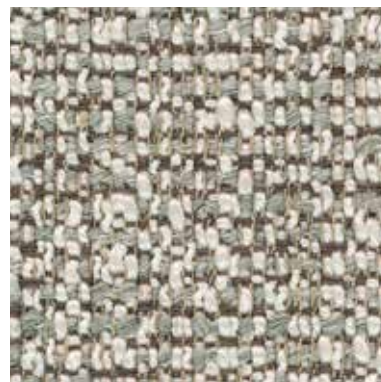




PABLO 09



PABLO 13



PABLO 49



PABLO 50



PABLO 75



PABLO 96



PABLO 154



PABLO 163



PABLO 168

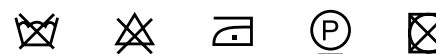


PABLO 171

INFORMAZIONI TECNICHE / TECHNICAL INFORMATION

Composizione / composition	23% WO - 48% PC - 12% PL - 7% CO - 10% NY
Martindale / martindale	24.000 cicli/cycles
Pilling / Pilling	4

MANUTENZIONE / MAINTENANCE



CAT. M

Meghan



MEGHAN 04



MEGHAN 13



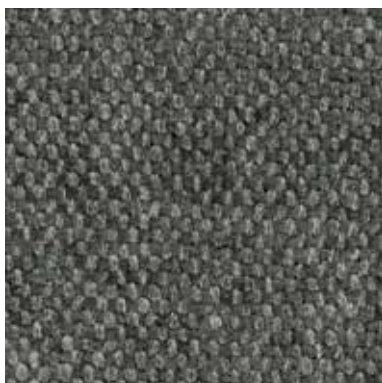
MEGHAN 19



MEGHAN 24



MEGHAN 56

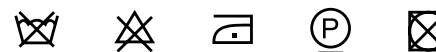


MEGHAN 63

INFORMAZIONI TECNICHE / TECHNICAL INFORMATION

Composizione / composition	66% PC - 11% LI - 12% PL - 11% VI
Martindale / martindale	30.000 cicli/cycles
Pilling / Pilling	4

MANUTENZIONE / MAINTENANCE



CAT. M

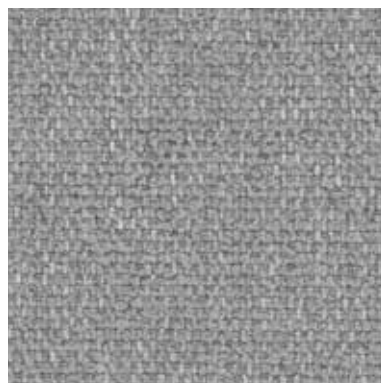
Medley



MEDLEY 002



MEDLEY 004



MEDLEY 007



MEDLEY 009



MEDLEY 010



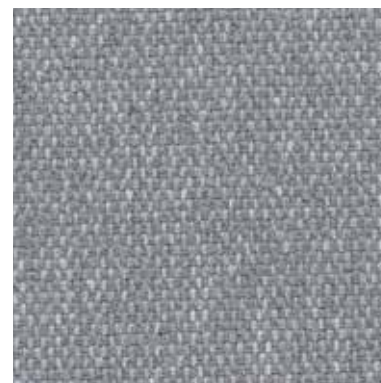
MEDLEY 011



MEDLEY 016



MEDLEY 018



MEDLEY 020



MEDLEY 022

INFORMAZIONI TECNICHE / TECHNICAL INFORMATION

Composizione / composition	85% PL - 15% CO
Martindale / martindale	30.000 cicli/cycles
Pilling / Pilling	5

MANUTENZIONE / MAINTENANCE



CAT. M

Medley



MEDLEY 023



MEDLEY 027

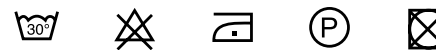


MEDLEY 028

INFORMAZIONI TECNICHE / TECHNICAL INFORMATION

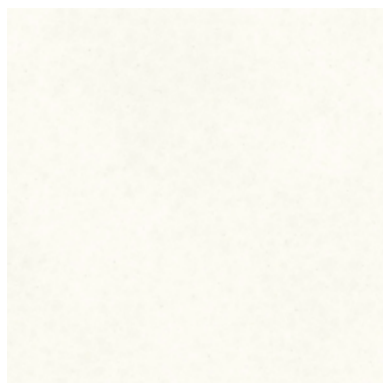
Composizione / composition	85% PL - 15% CO
Martindale / martindale	30.000 cicli/cycles
Pilling / Pilling	5

MANUTENZIONE / MAINTENANCE





MAYA 000



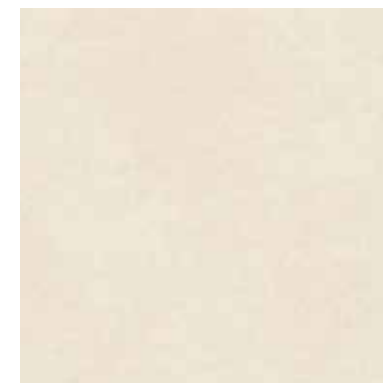
MAYA 001



MAYA 016



MAYA 020



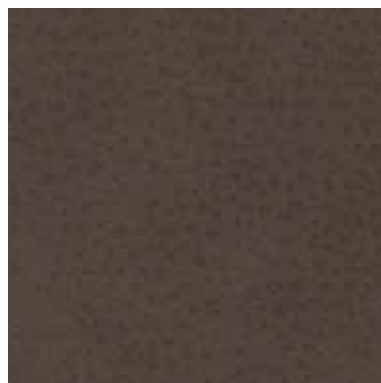
MAYA 100



MAYA 120



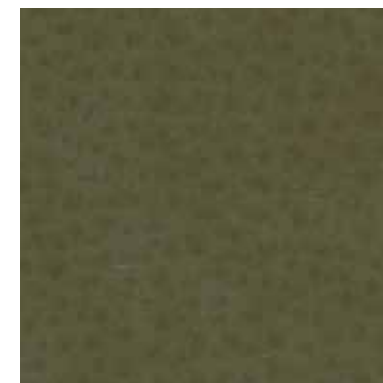
MAYA 175



MAYA 240



MAYA 275

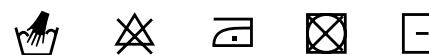


MAYA 280

INFORMAZIONI TECNICHE / TECHNICAL INFORMATION

Composizione / composition	30% CO - 2% PU - 68% PVC
Martindale / martindale	>50.000 cicli/cycles
Pilling / Pilling	-

MANUTENZIONE / MAINTENANCE





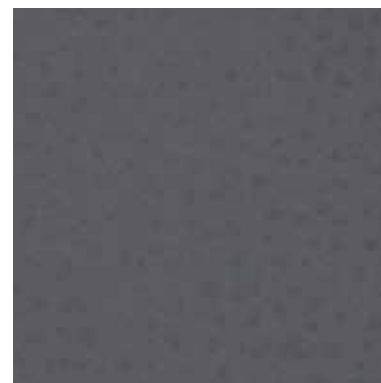
MAYA 410



MAYA 450



MAYA 750



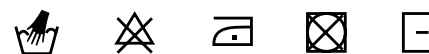
MAYA 791



MAYA 950

INFORMAZIONI TECNICHE / TECHNICAL INFORMATION

Composizione / composition	30% CO - 2% PU - 68% PVC
Martindale / martindale	>50.000 cicli/cycles
Pilling / Pilling	-

MANUTENZIONE / MAINTENANCE



MARTIN 101



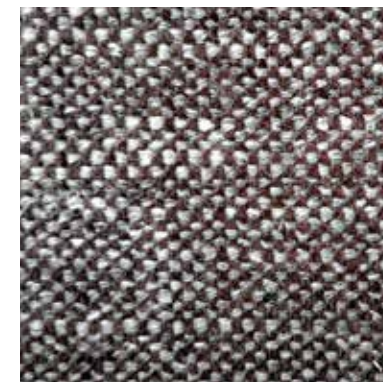
MARTIN 102



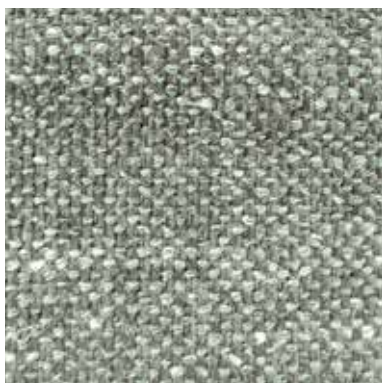
MARTIN 103



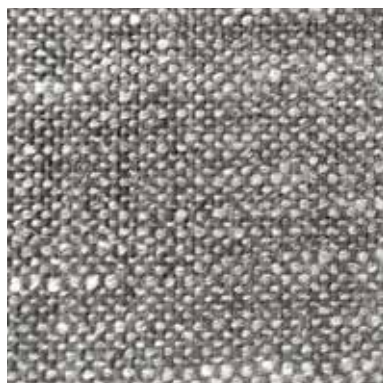
MARTIN 104



MARTIN 105



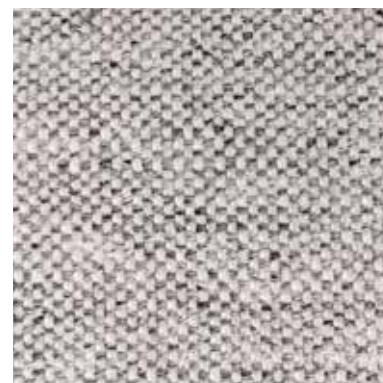
MARTIN 106



MARTIN 107



MARTIN 108



MARTIN 109

INFORMAZIONI TECNICHE / TECHNICAL INFORMATION

Composizione / composition	28% PL - 23% LI - 14% WO - 13% CO - 9% VI - 7% PA - 5% PC
Martindale / martindale	50.000 cicli/cycles
Pilling / Pilling	4

MANUTENZIONE / MAINTENANCE



CAT. M

Manhattan



MANHATTAN 001



MANHATTAN 002



MANHATTAN 009



MANHATTAN 012



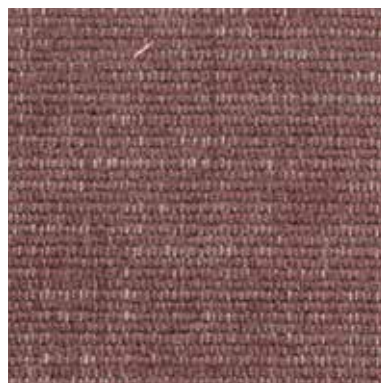
MANHATTAN 017



MANHATTAN 019



MANHATTAN 020



MANHATTAN 021



MANHATTAN 102

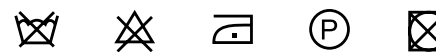


MANHATTAN 103

INFORMAZIONI TECNICHE / TECHNICAL INFORMATION

Composizione / composition	50% PL - 27% PC - 9% CO - 7% LI - 7% VI
Martindale / martindale	25.000 cicli/cycles
Pilling / Pilling	5

MANUTENZIONE / MAINTENANCE

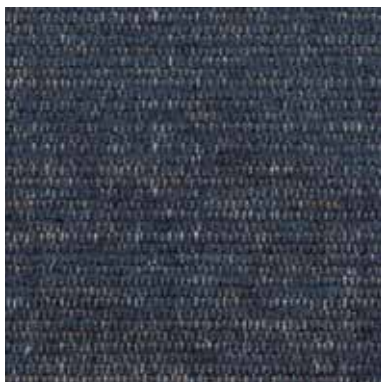


CAT. M

Manhattan



MANHATTAN 104

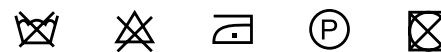


MANHATTAN 105

INFORMAZIONI TECNICHE / TECHNICAL INFORMATION

Composizione / composition	50% PL - 27% PC - 9% CO - 7% LI - 7% VI
Martindale / martindale	25.000 cicli/cycles
Pilling / Pilling	5

MANUTENZIONE / MAINTENANCE



CAT. M

Malaga



MALAGA 01



MALAGA 04



MALAGA 06



MALAGA 07



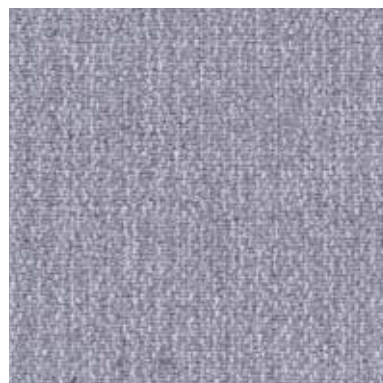
MALAGA 08



MALAGA 09



MALAGA 12



MALAGA 15



MALAGA 16

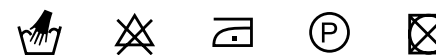


MALAGA 24

INFORMAZIONI TECNICHE / TECHNICAL INFORMATION

Composizione / composition	50% VI - 21% CO - 19% LI - 10% PL
Martindale / martindale	35.000 cicli/cycles
Pilling / Pilling	4/5

MANUTENZIONE / MAINTENANCE

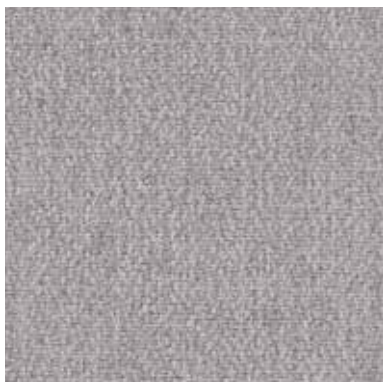


CAT. M

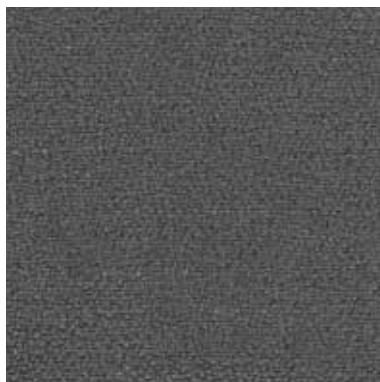
Malaga



MALAGA 26



MALAGA 40



MALAGA 41

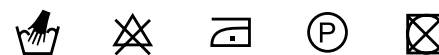


MALAGA 50

INFORMAZIONI TECNICHE / TECHNICAL INFORMATION

Composizione / composition	50% VI - 21% CO - 19% LI - 10% PL
Martindale / martindale	35.000 cicli/cycles
Pilling / Pilling	4/5

MANUTENZIONE / MAINTENANCE



CAT. M

Madera



MADERA 350



MADERA 360



MADERA 361



MADERA 362



MADERA 364



MADERA 551



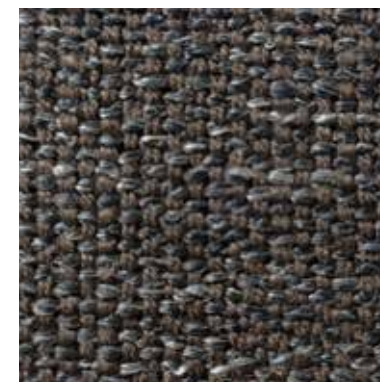
MADERA 571



MACRO 572



MACRO 573



MACRO 575

INFORMAZIONI TECNICHE / TECHNICAL INFORMATION

Composizione / composition	28% CO - 26%VI - 25% PC - 16% LI - 5% PL
Martindale / martindale	25.000 cicli/cycles
Pilling / Pilling	4

MANUTENZIONE / MAINTENANCE



CAT. L

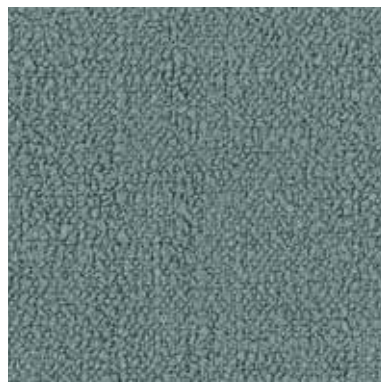
Lounge



LOUNGE 310



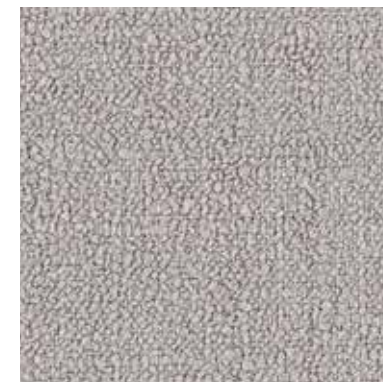
LOUNGE 315



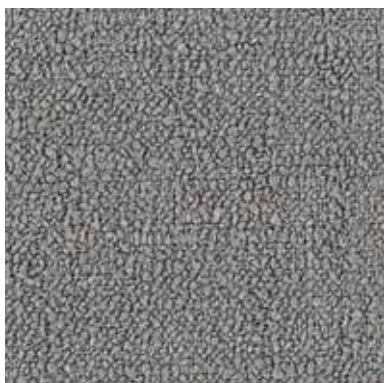
LOUNGE 319



LOUNGE 325



LOUNGE 331



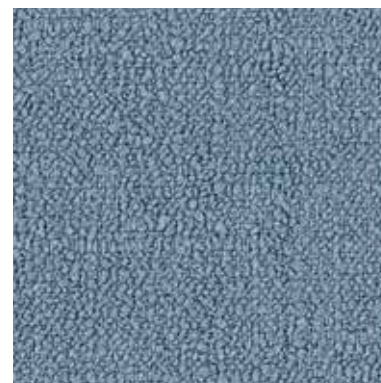
LOUNGE 332



LOUNGE 335



LOUNGE 348



LOUNGE 353

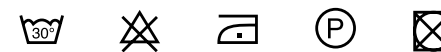


LOUNGE 357

INFORMAZIONI TECNICHE / TECHNICAL INFORMATION

Composizione / composition	100% PL
Martindale / martindale	30.000 cicli/cycles
Pilling / Pilling	4

MANUTENZIONE / MAINTENANCE

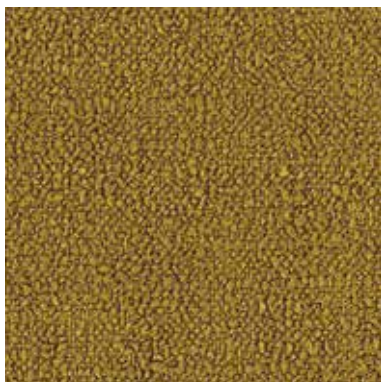


CAT. L

Lounge



LOUNGE 376



LOUNGE 381



LOUNGE 388



LOUNGE 392



LOUNGE 394

INFORMAZIONI TECNICHE / TECHNICAL INFORMATION

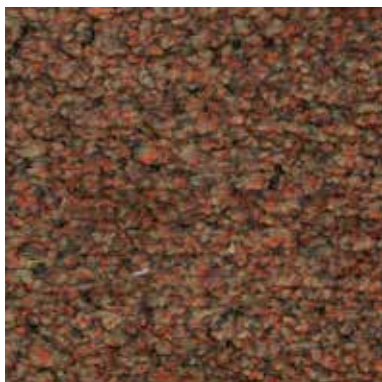
Composizione / composition	100% PL
Martindale / martindale	30.000 cicli/cycles
Pilling / Pilling	4

MANUTENZIONE / MAINTENANCE



CAT. L

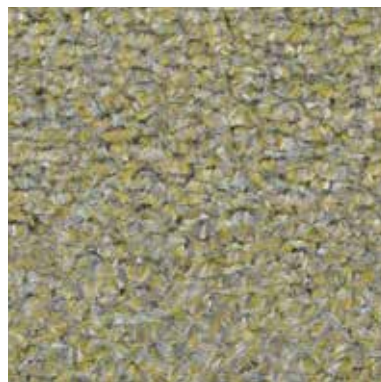
Lolita



LOLITA 105



LOLITA 125



LOLITA 129



LOLITA 131



LOLITA 133



LOLITA 134



LOLITA 153

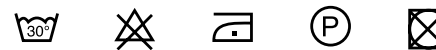


LOLITA 159

INFORMAZIONI TECNICHE / TECHNICAL INFORMATION

Composizione / composition	100% PL
Martindale / martindale	40.000 cicli/cycles
Pilling / Pilling	4

MANUTENZIONE / MAINTENANCE



CAT. L

Logan



LOGAN 001



LOGAN 002



LOGAN 004



LOGAN 006



LOGAN 011



LOGAN 012



LOGAN 014



LOGAN 015



LOGAN 019

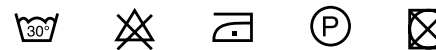


LOGAN 020

INFORMAZIONI TECNICHE / TECHNICAL INFORMATION

Composizione / composition	100% PL
Martindale / martindale	100.000 cicli/cycles
Pilling / Pilling	5

MANUTENZIONE / MAINTENANCE

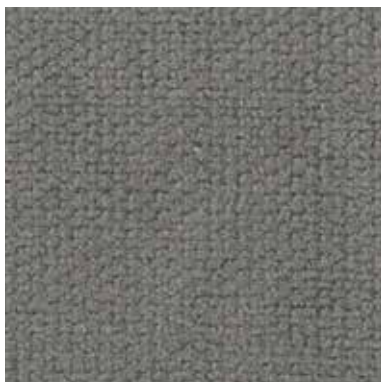


CAT. L

Logan



LOGAN 021



LOGAN 022



LOGAN 025

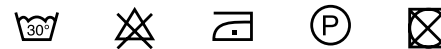


LOGAN 026

INFORMAZIONI TECNICHE / TECHNICAL INFORMATION

Composizione / composition	100% PL
Martindale / martindale	100.000 cicli/cycles
Pilling / Pilling	5

MANUTENZIONE / MAINTENANCE



CAT. L

Link



LINK 001



LINK 002



LINK 003



LINK 004



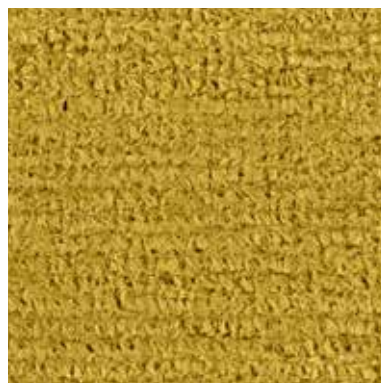
LINK 005



LINK 007



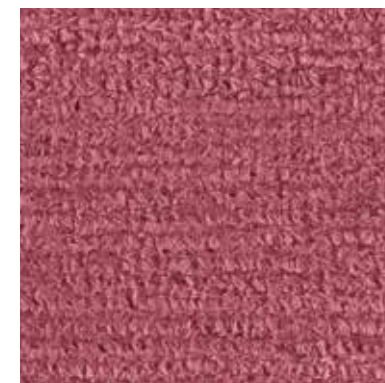
LINK 008



LINK 010



LINK 015

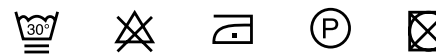


LINK 016

INFORMAZIONI TECNICHE / TECHNICAL INFORMATION

Composizione / composition	97% PL - 3% VI
Martindale / martindale	30.000 cicli/cycles
Pilling / Pilling	4

MANUTENZIONE / MAINTENANCE

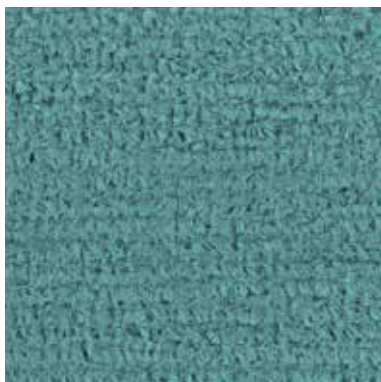


CAT. L

Link



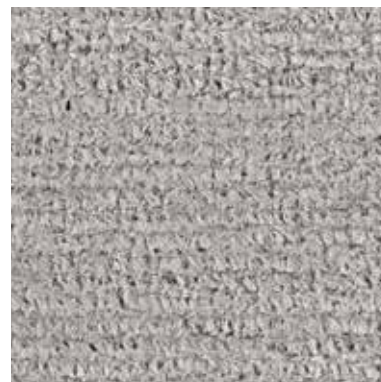
LINK 020



LINK 022



LINK 025



LINK 028

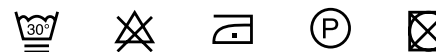


LINK 033

INFORMAZIONI TECNICHE / TECHNICAL INFORMATION

Composizione / composition	97% PL - 3% VI
Martindale / martindale	30.000 cicli/cycles
Pilling / Pilling	4

MANUTENZIONE / MAINTENANCE

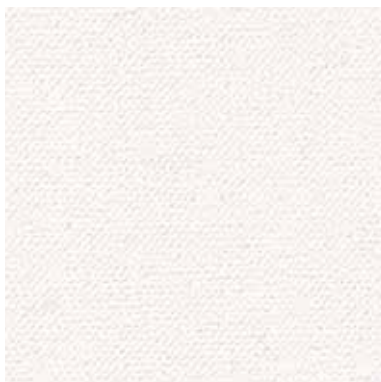


CAT. L

Like



LIKE 002



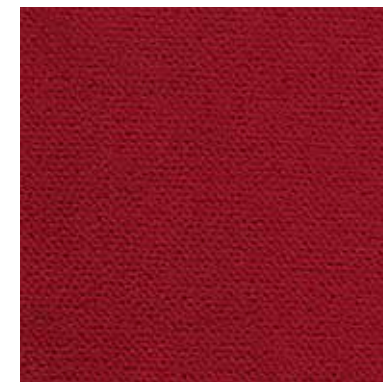
LIKE 111



LIKE 200



LIKE 301



LIKE 303



LIKE 304



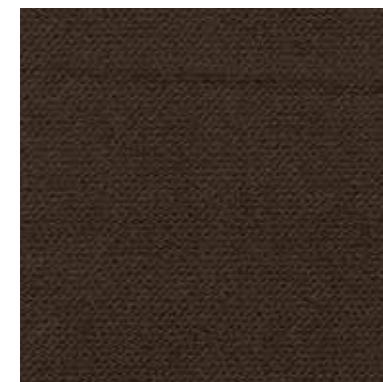
LIKE 307



LIKE 402




LIKE 404





LIKE 405

INFORMAZIONI TECNICHE / TECHNICAL INFORMATION

Composizione / composition	100% PL
Martindale / martindale	100.000 cicli/cycles
Pilling / Pilling	4

 **anallergico**
hypoallergenic

 **irrestringibile**
non-shrink

 **antimacchia**
stain resistant

MANUTENZIONE / MAINTENANCE



CAT. L

Like



LIKE 408



LIKE 600



LIKE 601



LIKE 602



LIKE 603



LIKE 604



LIKE 605



LIKE 700




LIKE 702





LIKE 704

INFORMAZIONI TECNICHE / TECHNICAL INFORMATION

Composizione / composition	100% PL
Martindale / martindale	100.000 cicli/cycles
Pilling / Pilling	4

 **anallergico**
hypoallergenic

 **irrestringibile**
non-shrink

 **antimacchia**
stain resistant

MANUTENZIONE / MAINTENANCE



CAT. L

Like



LIKE 705




LIKE 801





LIKE 804

INFORMAZIONI TECNICHE / TECHNICAL INFORMATION

Composizione / composition	100% PL
Martindale / martindale	100.000 cicli/cycles
Pilling / Pilling	4

 **anallergico**
hypoallergenic

 **irrestringibile**
non-shrink

 **antimacchia**
stain resistant

MANUTENZIONE / MAINTENANCE



CAT. L

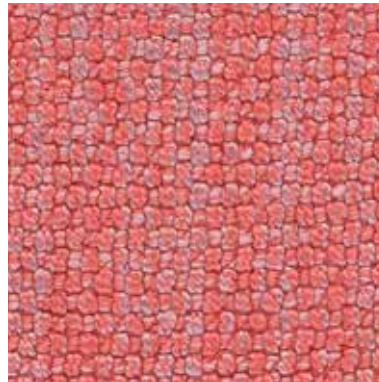
Lewis



LEWIS 102



LEWIS 201



LEWIS 315



LEWIS 400



LEWIS 403



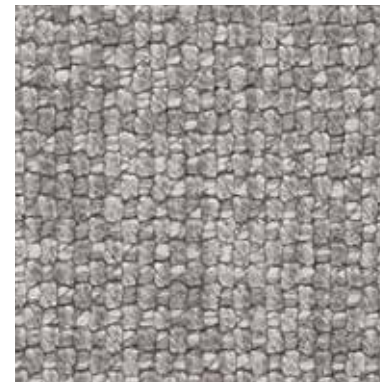
LEWIS 405



LEWIS 411



LEWIS 503



LEWIS 600

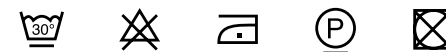


LEWIS 601

INFORMAZIONI TECNICHE / TECHNICAL INFORMATION

Composizione / composition	57% PL - 43% VI
Martindale / martindale	100.000 cicli/cycles
Pilling / Pilling	4

MANUTENZIONE / MAINTENANCE



CAT. L

Lewis



LEWIS 705



LEWIS 714



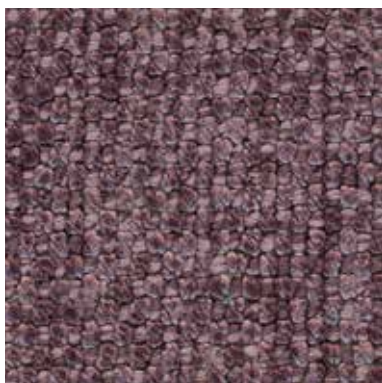
LEWIS 800



LEWIS 802



LEWIS 900

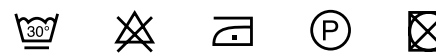


LEWIS 905

INFORMAZIONI TECNICHE / TECHNICAL INFORMATION

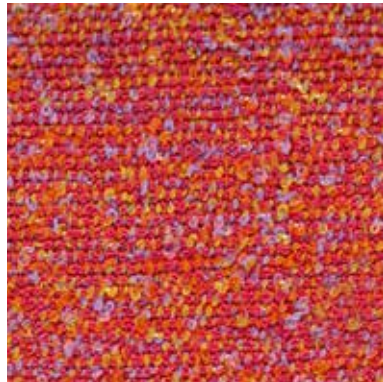
Composizione / composition	57% PL - 43% VI
Martindale / martindale	100.000 cicli/cycles
Pilling / Pilling	4

MANUTENZIONE / MAINTENANCE





EVERGREEN 101



EVERGREEN 304



EVERGREEN 305



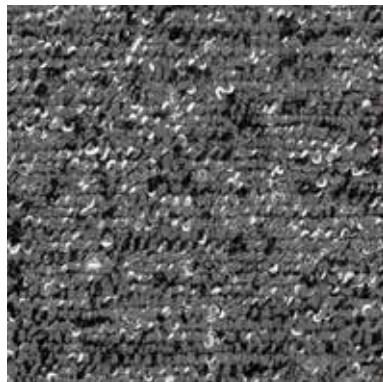
EVERGREEN 400



EVERGREEN 600



EVERGREEN 603



EVERGREEN 605



EVERGREEN 611



EVERGREEN 701



EVERGREEN 802

INFORMAZIONI TECNICHE / TECHNICAL INFORMATION

Composizione / composition	100% PP
Martindale / martindale	50.000 cicli/cycles
Pilling / Pilling	4

✓ Eco-friendly

✓ anallergico
hypoallergenic

✓ irrestringibile
non-shrink

MANUTENZIONE / MAINTENANCE





EVERGREEN 806



EVERGREEN 900


INFORMAZIONI TECNICHE / TECHNICAL INFORMATION


Composizione / composition

Martindale / martindale

Pilling / Pilling

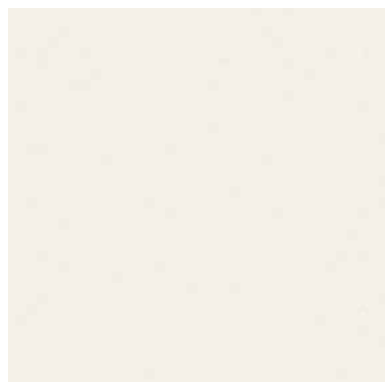
 Eco-friendly

 anallergico
hypoallergenic

 irrestringibile
non-shrink

MANUTENZIONE / MAINTENANCE





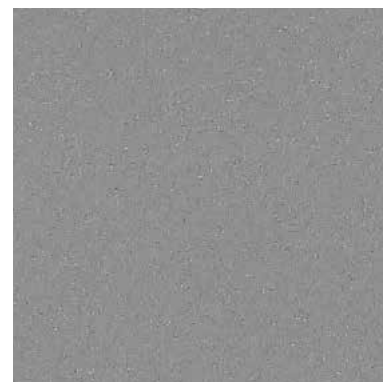
EVEREST 002



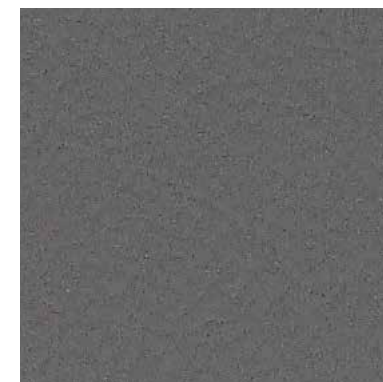
EVEREST 004



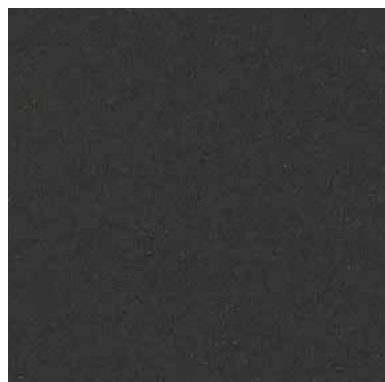
EVEREST 005



EVEREST 006



EVEREST 007



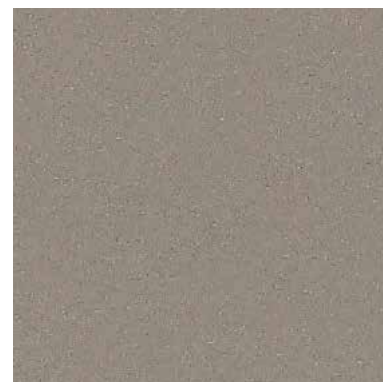
EVEREST 008



EVEREST 009



EVEREST 011



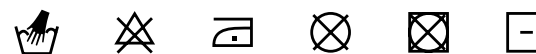
EVEREST 014



EVEREST 015

INFORMAZIONI TECNICHE / TECHNICAL INFORMATION

Composizione / composition	85% PVC - 15% PU
Martindale / martindale	50.000 cicli/cycles
Pilling / Pilling	-

MANUTENZIONE / MAINTENANCE



EVEREST 016



EVEREST 017



EVEREST 026



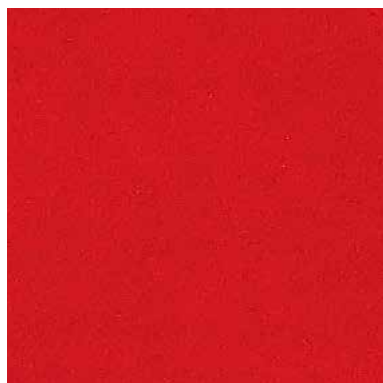
EVEREST 029



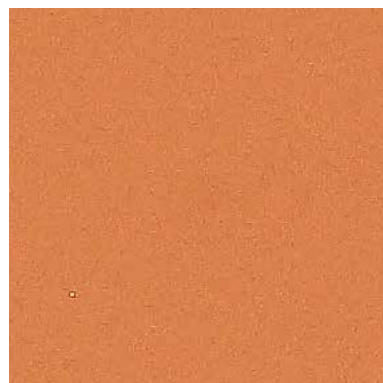
EVEREST 030



EVEREST 031



EVEREST 035



EVEREST 037



EVEREST 040



EVEREST 043

INFORMAZIONI TECNICHE / TECHNICAL INFORMATION

Composizione / composition	85% PVC - 15% PU
Martindale / martindale	50.000 cicli/cycles
Pilling / Pilling	-

MANUTENZIONE / MAINTENANCE



EVEREST 045



EVEREST 046



EVEREST 048



EVEREST 051



EVEREST 055

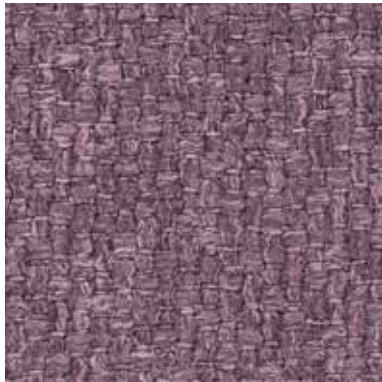
INFORMAZIONI TECNICHE / TECHNICAL INFORMATION

Composizione / composition	85% PVC - 15% PU
Martindale / martindale	50.000 cicli/cycles
Pilling / Pilling	-

MANUTENZIONE / MAINTENANCE

CAT. E

Even



EVEN 003



EVEN 111



EVEN 300



EVEN 408



EVEN 503



EVEN 600



EVEN 604



EVEN 608




EVEN 609



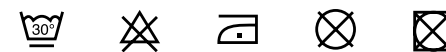
EVEN 610

INFORMAZIONI TECNICHE / TECHNICAL INFORMATION

Composizione / composition	100% PL
Martindale / martindale	50.000 cicli/cycles
Pilling / Pilling	4

 **idrorepellente**
water repellent

MANUTENZIONE / MAINTENANCE



CAT. E

Even



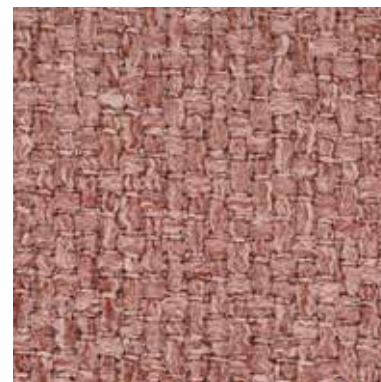
EVEN 705



EVEN 708




EVEN 801



EVEN 901

INFORMAZIONI TECNICHE / TECHNICAL INFORMATION

Composizione / composition	100% PL
Martindale / martindale	50.000 cicli/cycles
Pilling / Pilling	4

 **idrorepellente**
water repellent

MANUTENZIONE / MAINTENANCE



CAT. E

Enter



ENTER 006



ENTER 009



ENTER 013



ENTER 020



ENTER 024



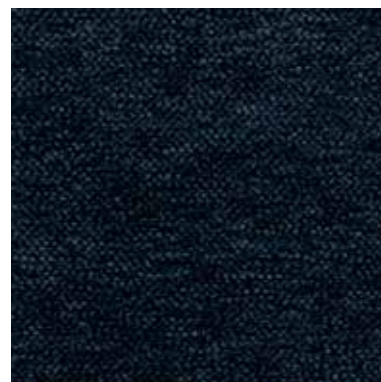
ENTER 025



ENTER 030



ENTER 037



ENTER 041



ENTER 044

INFORMAZIONI TECNICHE / TECHNICAL INFORMATION

Composizione / composition	100% PL
Martindale / martindale	40.000 cicli/cycles
Pilling / Pilling	4

MANUTENZIONE / MAINTENANCE



CAT. E

Enter



ENTER 057



ENTER 059



ENTER 062



ENTER 074



ENTER 100



ENTER 101

INFORMAZIONI TECNICHE / TECHNICAL INFORMATION

Composizione / composition	100% PL
Martindale / martindale	40.000 cicli/cycles
Pilling / Pilling	4

MANUTENZIONE / MAINTENANCE

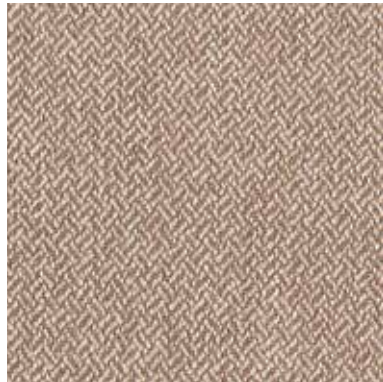


CAT. E

Emery



EMERY 07



EMERY 21



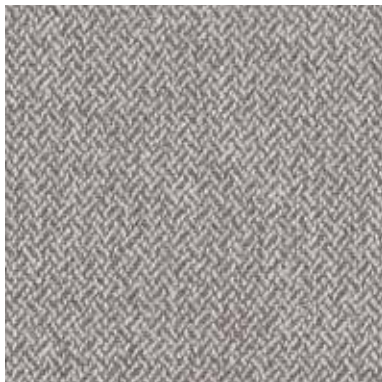
EMERY 24



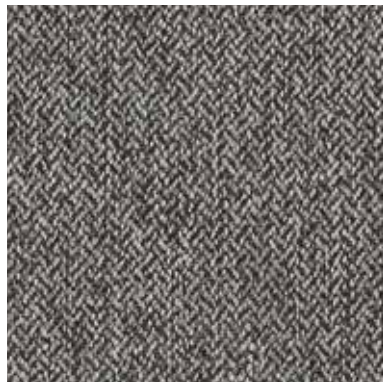
EMERY 25



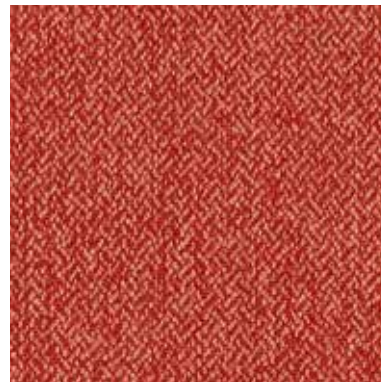
EMERY 30



EMERY 31



EMERY 37



EMERY 44




EMERY 53



EMERY 62

INFORMAZIONI TECNICHE / TECHNICAL INFORMATION

Composizione / composition	100% PL
Martindale / martindale	40.000 cicli/cycles
Pilling / Pilling	4

 idrorepellente
water repellent

MANUTENZIONE / MAINTENANCE

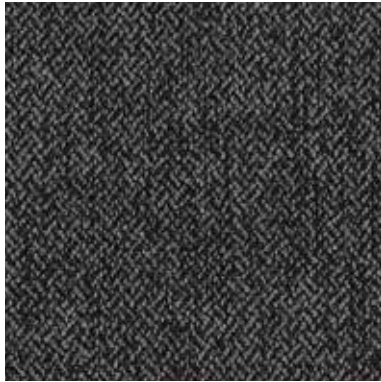


CAT. E

Emery




EMERY 70



EMERY 74

INFORMAZIONI TECNICHE / TECHNICAL INFORMATION

Composizione / composition	100% PL
Martindale / martindale	40.000 cicli/cycles
Pilling / Pilling	4

 idrorepellente
water repellent

MANUTENZIONE / MAINTENANCE



CAT. E

Easy Care



EASY CARE 001



EASY CARE 002



EASY CARE 003



EASY CARE 006



EASY CARE 007



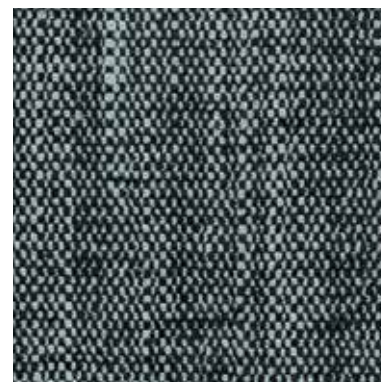
EASY CARE 008



EASY CARE 010



EASY CARE 012




EASY CARE 013




EASY CARE 015

INFORMAZIONI TECNICHE / TECHNICAL INFORMATION

Composizione / composition	70% PL - 30% LI
Martindale / martindale	50.000 cicli/cycles
Pilling / Pilling	5

 **idrorepellente**
water repellent

 **irrestringibile**
non-shrink

 **antimacchia**
stain resistant

MANUTENZIONE / MAINTENANCE



CAT. E

Easy Care




EASY CARE 016





EASY CARE 017

INFORMAZIONI TECNICHE / TECHNICAL INFORMATION

Composizione / composition	70% PL - 30% LI
Martindale / martindale	50.000 cicli/cycles
Pilling / Pilling	5

 **idrorepellente**
water repellent

 **irrestringibile**
non-shrink

 **antimacchia**
stain resistant

MANUTENZIONE / MAINTENANCE



CAT. A

Atene



ATENE 02



ATENE 03



ATENE 04



ATENE 05



ATENE 06



ATENE 10



ATENE 11



ATENE 20




ATENE 23



ATENE 24

INFORMAZIONI TECNICHE / TECHNICAL INFORMATION

Composizione / composition	100% PL
Martindale / martindale	50.000 cicli/cycles
Pilling / Pilling	4

 idrorepellente
water repellent

MANUTENZIONE / MAINTENANCE



CAT. A


Atene



ATENE 29

INFORMAZIONI TECNICHE / TECHNICAL INFORMATION

Composizione / composition	100% PL
Martindale / martindale	50.000 cicli/cycles
Pilling / Pilling	4

 **idrorepellente**
water repellent

MANUTENZIONE / MAINTENANCE



CAT. A

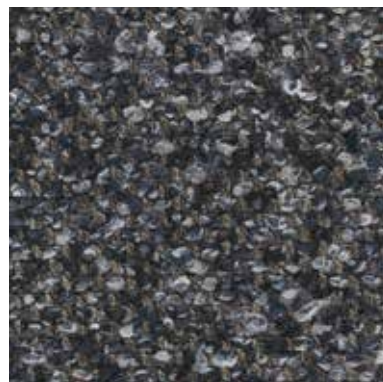
Andorra



ANDORRA 403



ANDORRA 406



ANDORRA 408



ANDORRA 410



ANDORRA 411



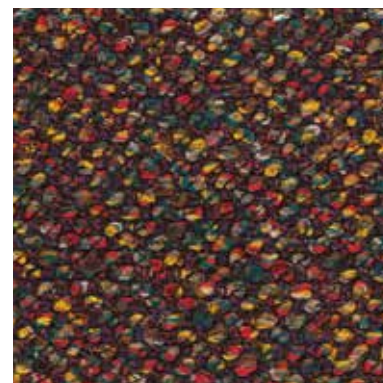
ANDORRA 413



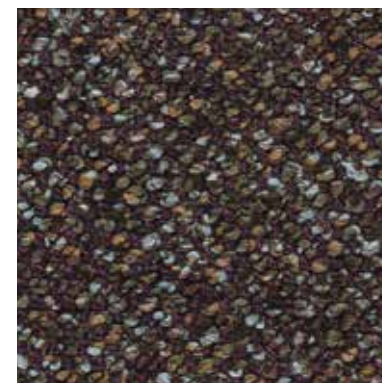
ANDORRA 414



ANDORRA 415



ANDORRA 417



ANDORRA 418

INFORMAZIONI TECNICHE / TECHNICAL INFORMATION

Composizione / composition	99% PES - 1% PAN
Martindale / martindale	100.000 cicli/cycles
Pilling / Pilling	4

MANUTENZIONE / MAINTENANCE



CAT. A

Amalfi



AMALFI 100



AMALFI 101



AMALFI 102



AMALFI 105



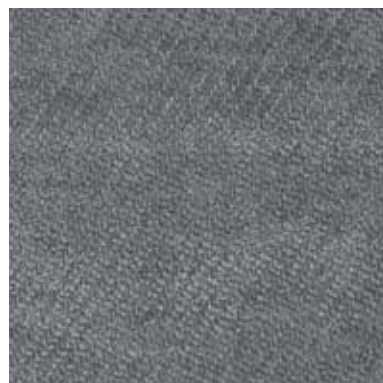
AMALFI 110



AMALFI 120



AMALFI 122




AMALFI 127




AMALFI 130

INFORMAZIONI TECNICHE / TECHNICAL INFORMATION

Composizione / composition	100% PL
Martindale / martindale	85.000 cicli/cycles
Pilling / Pilling	4/5

 idrorepellente
water repellent

 antimacchia
stain resistant

MANUTENZIONE / MAINTENANCE



CAT. A

After



AFTER 011



AFTER 033



AFTER 043



AFTER 045



AFTER 060



AFTER 061



AFTER 063



AFTER 064




AFTER 076




AFTER 084

INFORMAZIONI TECNICHE / TECHNICAL INFORMATION

Composizione / composition	100% PL
Martindale / martindale	60.000 cicli/cycles
Pilling / Pilling	5

 idrorepellente
water repellent

 irrestingibile
non-shrink

MANUTENZIONE / MAINTENANCE



CAT. A


After



AFTER 095

INFORMAZIONI TECNICHE / TECHNICAL INFORMATION

Composizione / composition	100% PL
Martindale / martindale	60.000 cicli/cycles
Pilling / Pilling	5

 **idrorepellente**
water repellent

 **irrestringibile**
non-shrink

MANUTENZIONE / MAINTENANCE



CAT. A

Adria



ADRIA 207



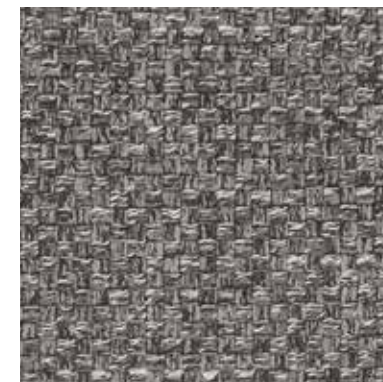
ADRIA 215



ADRIA 225



ADRIA 231



ADRIA 232



ADRIA 245



ADRIA 262




ADRIA 275



ADRIA 284

INFORMAZIONI TECNICHE / TECHNICAL INFORMATION

Composizione / composition	70% PL - 30% VI
Martindale / martindale	30.000 cicli/cycles
Pilling / Pilling	4

 idrorepellente
water repellent

MANUTENZIONE / MAINTENANCE



**DITRE
ITALIA**

31016 Cordignano (Treviso) Zona Industriale Via del Lavoro, 21
Tel. +39.0438.9999 Fax +39.0438.999993 www.ditreitalia.it info@ditreitalia.it